

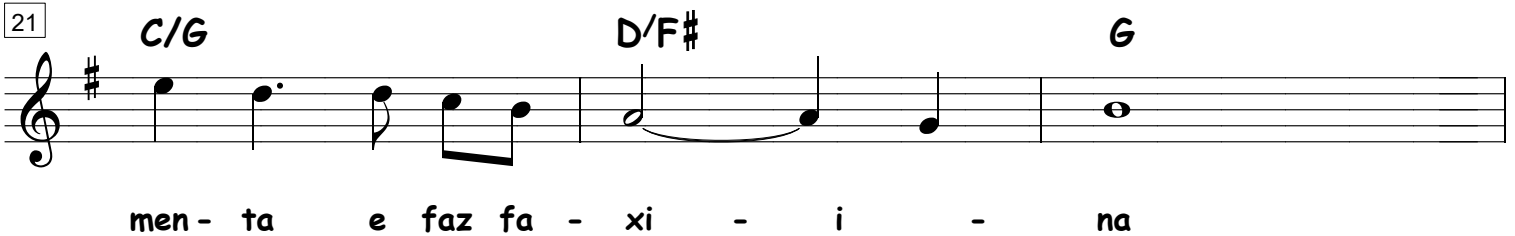
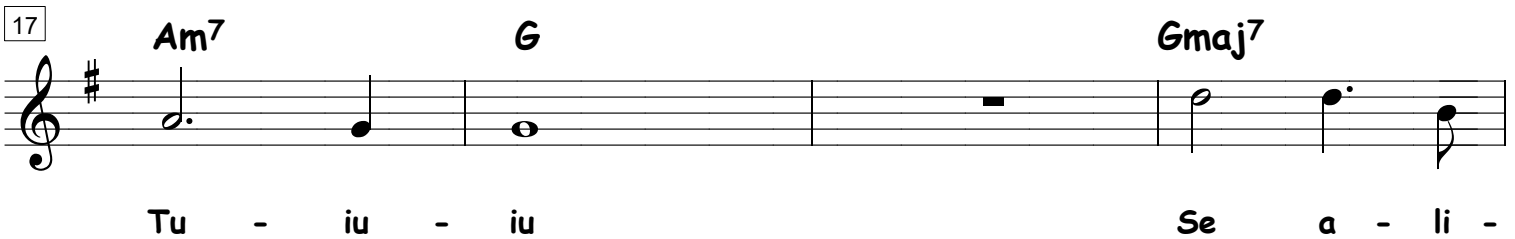
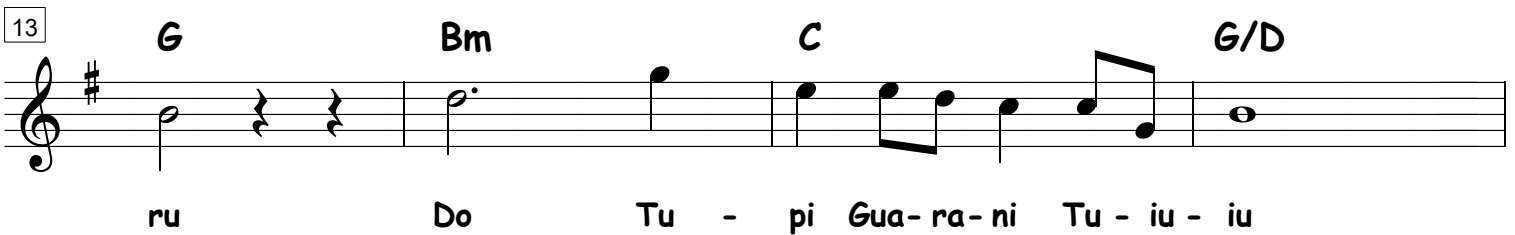
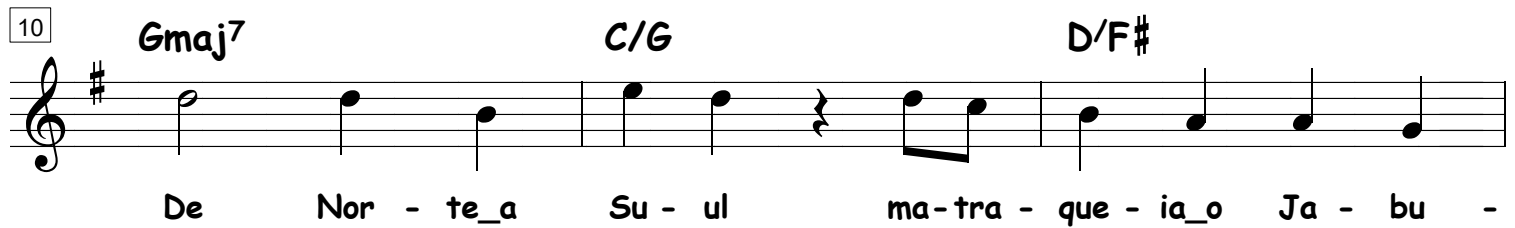
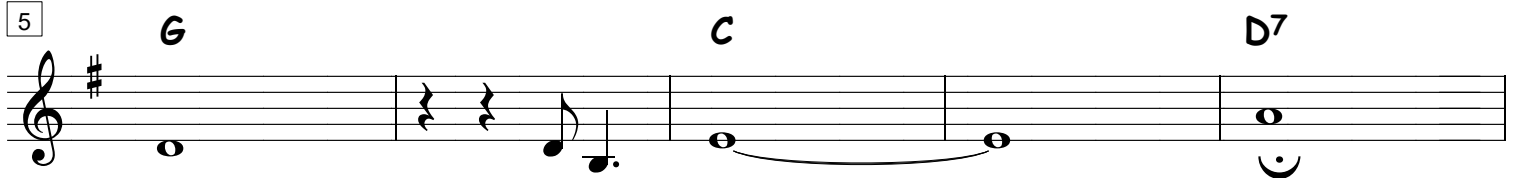
TUIUIU

transcrição: Lilian Carvalho

Letra: Ana Maria Soares Pereira

Música: Saulo França Amui

♩ = 60



TUIUIU

28 **G** **Am⁷/G** **G**

a No char - co e no ba - nha - do o tra -

32 **Am/G** **G** **C** **G/B**

ba - lho mais hon - ra - do Às ve - zes so - li - tá - rio mui - tas

36 **Gm/B^b** **F/A** **C** **G/B**

ve - zes bem a - com - pa - nha - do Lá bem no al - to no ga - lho

40 **Gm/B^b** **F/A** **B^b** **C** **F** **F/A**

sê - co o ni - nho for - te e em - plu - ma - a - a - a -

45 **B^b** **C** **B^b/C** **C/E** **F** **F/A**

do - o Gi - gan - tes a - sas

51 **B^b** **C** **C/E** **F** **F** **F/A**

bran - cas no ar co - mo ban - dei - ras da paz a tre - mu - lar O so - nho de Í - ca - ro

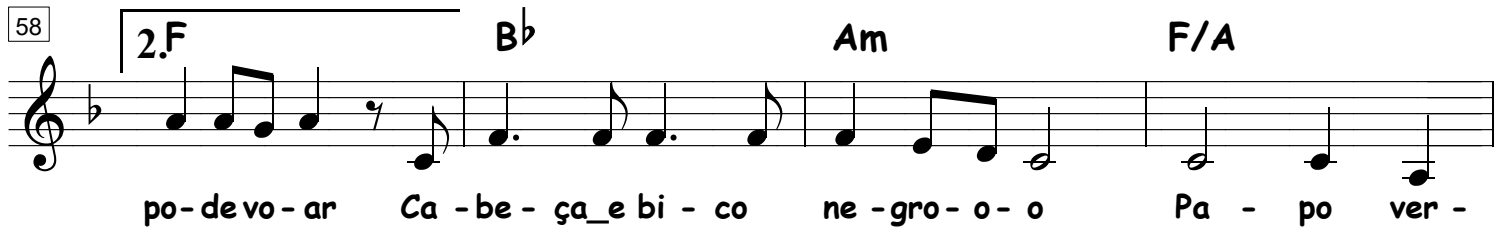
55 **B^b** **C** **C/E** **1. F**

a nos lem - brar o ho - mem tam - bém po - de vo - ar Gi -

TUIUIU

58

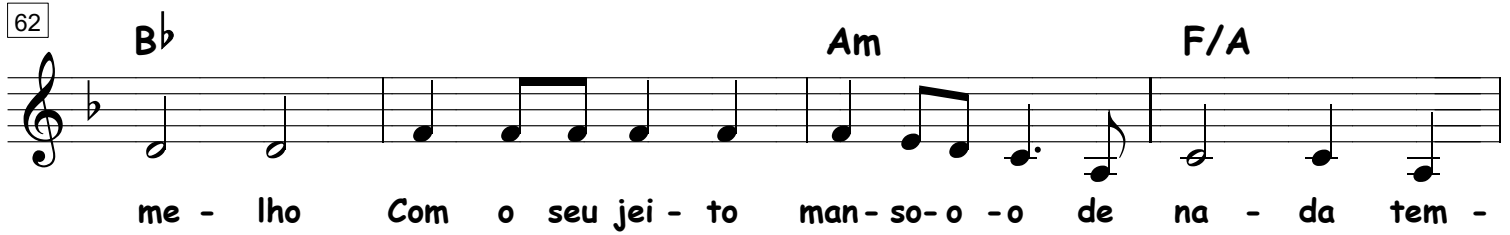
2.F B \flat Am F/A



po-devo-ar Ca-be-ça_e bi-co ne-gro-o-o Pa-po ver-

62

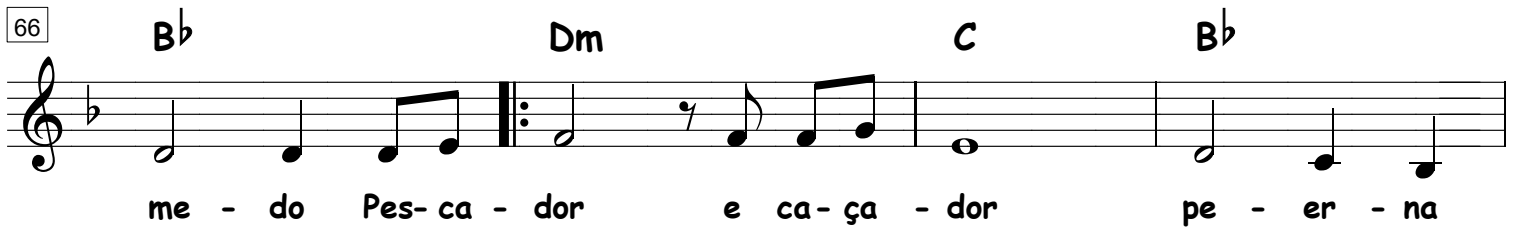
B \flat Am F/A



me-lho Com o seu jei-to man-so-o-o de na-da tem-

66

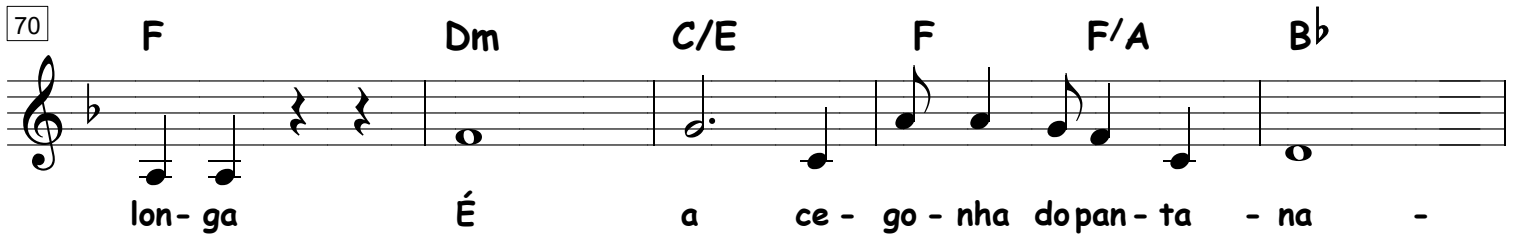
B \flat Dm C B \flat



me-do Pes-ca-dor e ca-ça-dor pe-er-na

70

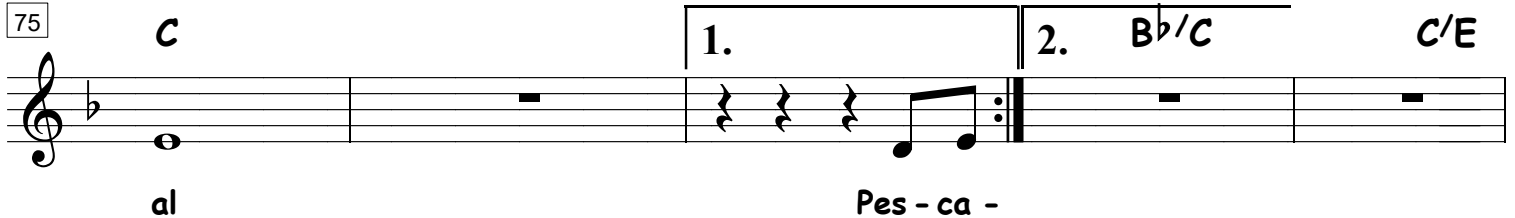
F Dm C/E F F/A B \flat



lon-ga É a ce-go-nha dopan-ta-na-

75

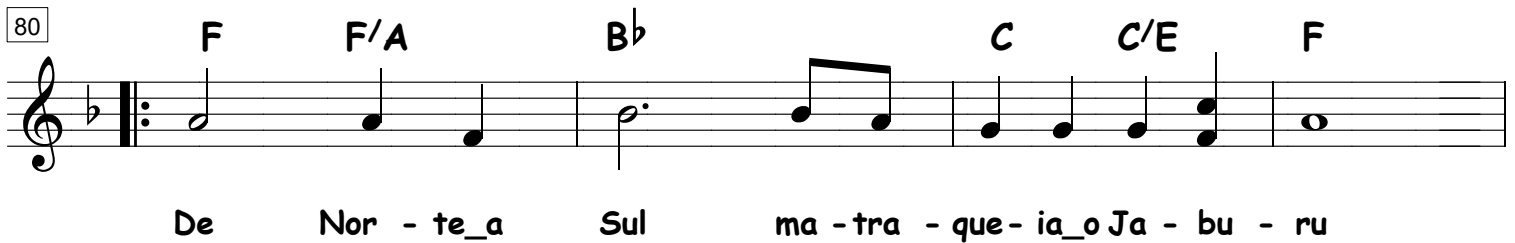
C 1. 2. B \flat /C C/E



al Pes-ca-

80

F F/A B \flat C C/E F



De Nor-te_a Sul ma-tra-que-ia_o Ja-bu-ru

84

F F/A B \flat C C/E 1. F



do Tu-pi Gua-ra-ni Tu-iu-iu Tu-iu-iu

instrumental TUIUIU

88

2. F F F/A B \flat C C/E F

iu

93

F F/A B \flat C C/E F

Gi -

97

F F/A B \flat C C/E F

gan-tes a- sas bran-cas no ar co-mo ban-dei-ras da paz a tre-mu-lar O

101

F F/A B \flat C C/E

so - nho de Í - ca - ro a nos lem - brar o ho - mem tam - bém

104

1. F 2. F Dm

po - de vo - ar Gi - po - de vo - ar O ho - mem tam - bém

107

Am B \flat 1., 2. C 3. C F

po - de vo - ar ah! ah! O ah! ah!